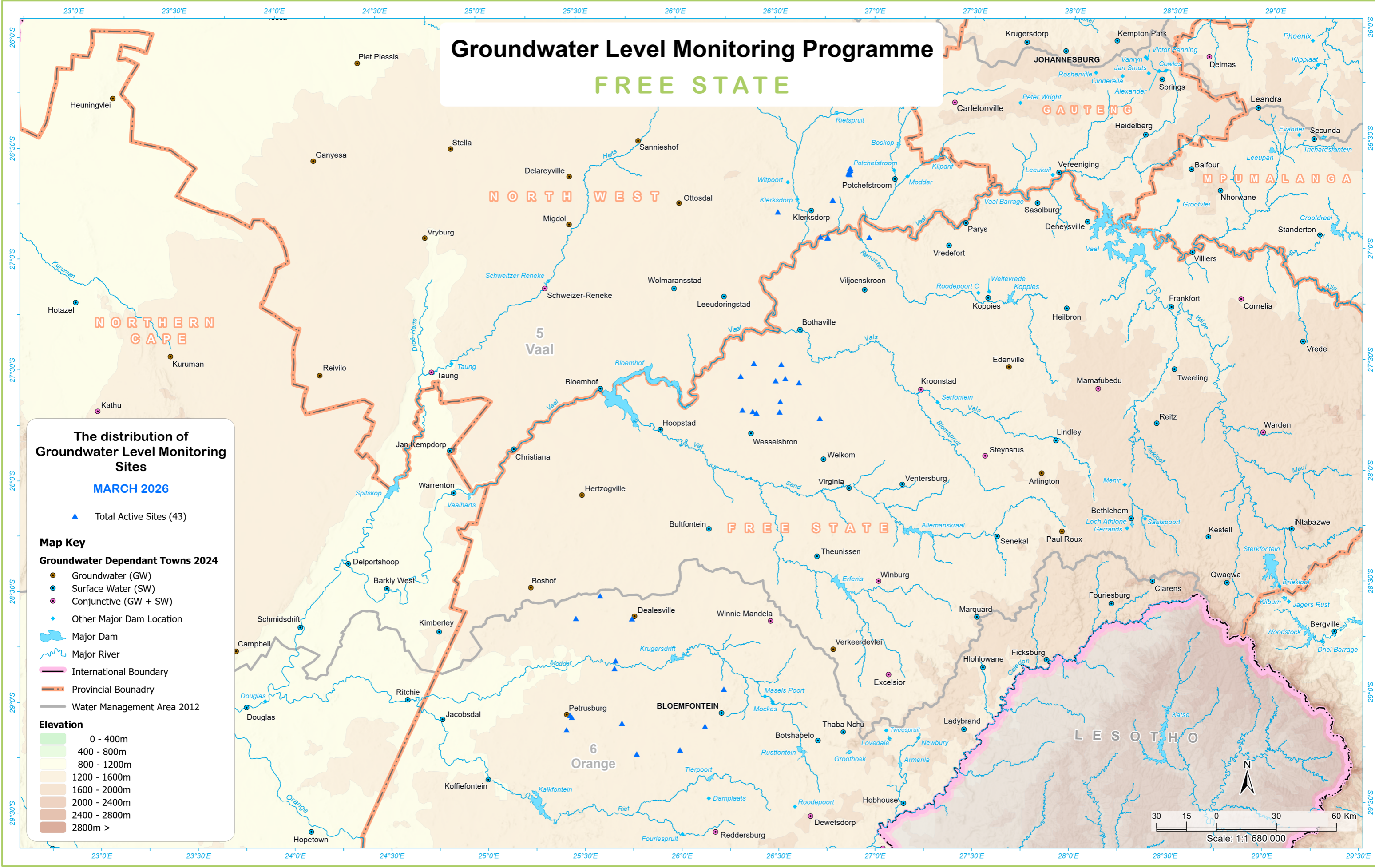


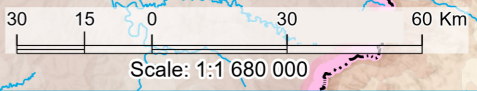
Groundwater Level Monitoring Programme

FREE STATE



The distribution of Groundwater Level Monitoring Sites
MARCH 2026

- ▲ Total Active Sites (43)
- Map Key**
- Groundwater Dependant Towns 2024**
- Groundwater (GW)
 - Surface Water (SW)
 - Conjunctive (GW + SW)
 - ◆ Other Major Dam Location
 - Major Dam
 - Major River
 - International Boundary
 - Provincial Boundary
 - Water Management Area 2012
- Elevation**
- 0 - 400m
 - 400 - 800m
 - 800 - 1200m
 - 1200 - 1600m
 - 1600 - 2000m
 - 2000 - 2400m
 - 2400 - 2800m
 - 2800m >



Data sources:
 Towns, Rivers, Dams, Elevation and International Boundaries - Department of Agriculture, Land Reform and Rural Development (DALRRD), Chief Directorate: National Geospatial Information (NGI); National Groundwater Archive (NGA) & Water Management Areas - Department of Water & Sanitation, Directorate: National Hydrological Services; Water Management System (WMS) - Department of Water & Sanitation, Directorate: Recourse Quality Information Services (RQIS).

Map produced by:
 Department of Water & Sanitation: Directorate: Spatial Information (SI);
 Sub-Directorate: Geographic Information and Archiving (GI&A) - Cartographic Services Unit.
 Map Date: Mar 2026 (Ref: GM26_004).